

# BLACK+<sup>®</sup> DECKER

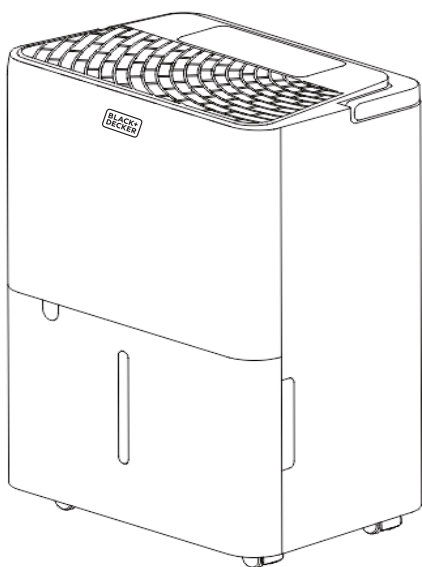


**ACTIVATE  
WARRANTY**

## PORTABLE DEHUMIDIFIER

## INSTRUCTION MANUAL

CATALOG NUMBER  
**BDT08TW**



**Thank you for choosing BLACK+DECKER!**

**PLEASE READ BEFORE RETURNING THIS PRODUCT FOR ANY REASON.**

If you have a question or experience a problem with your BLACK+DECKER purchase, go to [www.blackanddecker.com/instantanswers](http://www.blackanddecker.com/instantanswers)

If you can't find the answer or do not have access to the Internet, call 844-299-0879 from 10:30 a.m. to 6:30 p.m. EST Mon. - Fri. to speak with an agent. Please have the catalog number available when you call.

**SAVE THIS MANUAL FOR FUTURE REFERENCE.**

# CONTENTS

## SAFETY INFORMATION

Important Safety Instructions.....	3-4
Grounding Instructions.....	4
Safety Guidelines .....	4
Power Cord Operation.....	4

## SET UP & USE

Parts & Features .....	5
Control Panel .....	6
Before First Use .....	8
Installation .....	8
Full Bucket Indicator .....	9
Cleaning The Filter .....	10
Automatic Defrost.....	10
Continuous Drainage.....	11
Location Requirements .....	12

CLEANING & CARE.....	13
----------------------	----

## TROUBLESHOOTING & WARRANTY

Before You Call For Service.....	14
Important .....	14
Troubleshooting.....	15-16
Limited Warranty .....	17

# PRODUCT REGISTRATION

Thank you for purchasing our BLACK+DECKER product. This easy-to-use manual will guide you in getting the best use of your portable dehumidifier.

---

Model number

---

Serial number

Remember to record the model and serial numbers. They are on a label on the rear.

---

Date of purchase

Staple your receipt to your manual.  
You will need it to obtain warranty service.

## SAFETY INFORMATION



### DANGER

**DANGER** - Immediate hazards which **WILL** result in severe personal injury or death



### WARNING

**WARNING** - Hazards or unsafe practices which **COULD** result in severe personal injury or death



### CAUTION

**CAUTION** - Hazards or unsafe practices which **COULD** result in minor personal injury

## IMPORTANT SAFETY INSTRUCTIONS



### WARNING

When using electrical appliances, basic safety precautions should be followed, including the following

1. Always place the unit on a level surface strong enough to support the unit with a full bucket of water
2. Never use or store gasoline or other flammable vapor or liquid near this unit
3. Minimum installation clearance: 11.8 inches around the unit and 17.7 inches above the unit. Do not block or cover air inlet or outlet grills.
4. The unit must be connected to a correctly grounded power supply.
5. Do not start or stop the unit by inserting or pulling out the power plug.
6. Do not use an adapter plug or extension cord.
7. Do not use the unit in the immediate surroundings of a bath, a shower, swimming pool or clothes dryer.
8. Do not insert anything into the air outlet.
9. If the supply cord is damaged, it must be replaced by the manufacturer, its service agent or similar qualified person in order to avoid a hazard.
10. When cleaning the unit, always turn the unit off and unplug the power cord.
11. Do not use outdoors. Intended for indoor use only.
12. Place the dehumidifier in an area where the temperature will not fall below 41° Fahrenheit. The coils can become covered with frost if the room temperature is too low, which may reduce performance.
13. The appliance shall be installed in accordance with national wiring regulations.
14. The appliance is not intended for use by persons (including children) with reduced physical, sensory or mental capabilities, or lack of experience and knowledge, unless they have been given supervision or instruction concerning use of the appliance by a person responsible for their safety.

**SAVE THESE INSTRUCTIONS**  
**HOUSEHOLD USE ONLY**

# SAFETY INFORMATION

## GROUNDING INSTRUCTIONS

### ELECTRICAL REQUIREMENTS

The electrical requirements are a 115 volt 60 Hz, dehumidifier only, 15 amp. It is recommended that a separate circuit serving only the product be provided. The product is equipped with a 3-wire cord having a 3-prong grounding plug. It must be plugged into a wall receptacle that is properly installed and grounded.

This appliance must be grounded. In the event of an electrical short circuit, grounding reduces risk of electric shock by providing an escape wire for the electric current. The cord provided with this appliance is equipped with a grounding wire and a grounding plug. The plug must be plugged into an outlet that is properly installed and grounded.

Avoid the use of three prong adapters or cutting off the third grounding prong in order to accommodate a two prong outlet. This is a dangerous practice since it provides no effective grounding for the air conditioner and may result in shock hazard.

### **WARNING**

Improper use of the grounding plug can result in a risk of electric shock.

Consult a qualified electrician or serviceman if:

- 1) The grounding instructions are not completely understood.
- 2) You are unsure that the appliance is properly grounded.
- 3) You have any questions about the grounding or electrical instructions.

### POWER SUPPLY CORD

1. Avoid the use of an extension cord because of potential safety hazards under certain conditions. Have a qualified electrician or serviceman install an outlet near the appliance.
2. If it is absolutely necessary to use longer cord sets or an extension cord, extreme care must be exercised.
  - a) Use only a grounding type 3-wire extension cord that has a 3-blade grounding plug and a 3-slot receptacle that will accept the plug on the appliance.
  - b) The marked electrical rating of the cord set or extension cord must equal to or greater than the electrical rating of the appliance. The longer cord should be arranged so that it will not drape over the counter top or table top where it can be pulled on by children or tripped over unintentionally.

**NOTE:** Neither BLACK+DECKER nor the dealer can accept any liability for damage to the product or personal injury resulting from failure to observe the electrical connection procedures.

# SET UP & USE

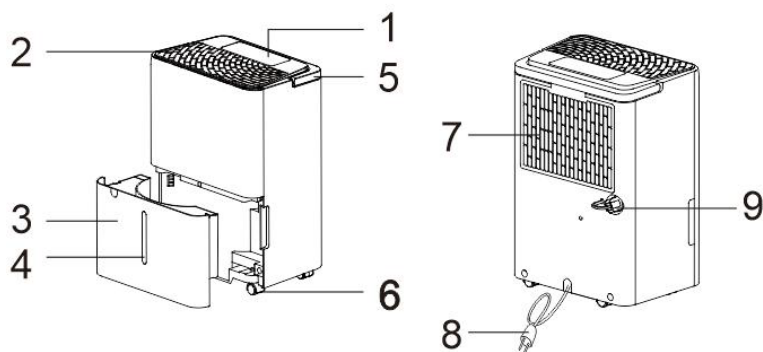
## WARNING:

- This appliance is not intended for use by persons (including children) with reduced physical, sensory or mental capabilities, or lack of experience and knowledge, unless they have been given supervision or instruction concerning use of the appliance by a person responsible for their safety.
- Children should be supervised to ensure that they do not play with the appliance.
- If the SUPPLY CORD is damaged, it must be replaced by the manufacturer, its service agent or similarly qualified persons in order to avoid a hazard.
- The appliance shall be installed in accordance with national wiring regulations.
- Do not use means to accelerate the defrosting process or to clean, other than those recommended by the manufacturer.
- The appliance shall be stored in a room without continuously operating ignition sources (for example open flames, an operating gas appliance or an operating electric heater).
- Do not pierce or burn.
- Be aware that refrigerants may not contain an odor.
- The handling, installation, storage, servicing and disposal must comply with the provisions of gas-related national laws and regulations, and also national wiring regulation.
- It is necessary to clear away the refrigerant in the system when maintaining or scrapping an appliance.
- Ventilated area (open doors and Windows)  
Ensure that the working area is open or well ventilated before turning on the system or performing hot work. Ventilation should be maintained during operation. Ventilation quickly displaces safely diluted leaked refrigerant into the atmosphere.
- Flammable refrigerant R32/R290 is used within appliance. Please follow the instructions carefully to handle, install, clean, and service the appliance to avoid damage or hazard. Do not dispose of appliance in regular trash. Contact qualified agency for proper disposal.
- Servicing shall be performed only as recommended by the manufacturer.



## SET UP & USE

### PARTS & FEATURES

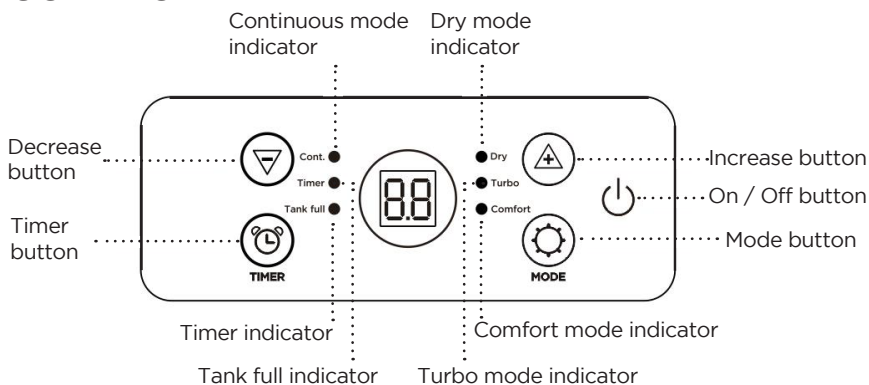



### Component Description

- |                            |                      |
|----------------------------|----------------------|
| 1. Control panel           | 6. Castor            |
| 2. Air outlet              | 7. Air intake grille |
| 3. Bucket                  | 8. Power cord        |
| 4. Water level view window | 9. Drain port        |
| 5. Handle                  |                      |

# SET UP & USE

## CONTROL PANEL






"" button

- On / off power supply, used to control the start-up or shut down the appliance.


Decrease / Increase button

- Press "+" / "-" to select the indoor humidity level you expect to achieve, or set the time.

"" button:


Press the "" button to turn on the appliance, and press the "" button to choose different mode.

\* Dry mode

Press the "" button until the "DRY" symbol is active.

- Press the "+" or "-" to choose the humidity desired, humidity adjustable range is 35%RH - 80%RH. The screen will display the setting humidity, and after few seconds, turn to display the ambient humidity.
- When the ambient humidity is lower than setting humidity, the compressor stops running, and after few minutes the fan will stop running.
- The default fan speed is low and cannot be adjusted.

\* Turbo mode

- Press the "" button until the "Turbo" symbol lights up, the setting humidity is 35%RH, press the "+" or "-" to choose the humidity desired.
- The screen will display the setting humidity, and after 2 seconds, turn to display the ambient humidity.
- The default fan speed is high and cannot be adjusted.

## SET UP & USE

### \* Comfort mode

- Press the "☼" button until the "Comfort" indicator lights up, the appliance will set humidity according to the ambient temperature. Humidity cannot be adjusted and show the ambient humidity.
- The default fan speed is low and can not be adjusted.
- When comfort mode is active, the screen light will go dim, after 1 minute the screen will turn off.
- Press other button to check the status, the screen will light up again and after 1 minute will turn off.

### \* Continuous mode

- Press the "☼" button until the "Cont." indicator lights up the setting humidity is 15%RH and can not be adjusted, the unit will continuously run.
- The default fan speed is low and can not be adjusted.

### "⌚" button

This timer can be used to delay the appliance start-up or shutdown, this avoids wasting electricity by optimizing operating periods.

### \* Programming start-up

- Turn on the appliance, choose the mode you want, for example Dry mode, 65%RH. Turn off the appliance.
- Press the "⌚" button, the screen starts to flash, press the "+" or "-" to adjust the set time from 0.5-24 hours.
- In 5 seconds without operation, the timer will start the function, then the "Timer" indicator light will be active
- The control will count down the time remaining until start-up.
- Press the "⌚" button again to cancel the Timer, and the "Timer" indicator will turn off.

### \* Programming shut down

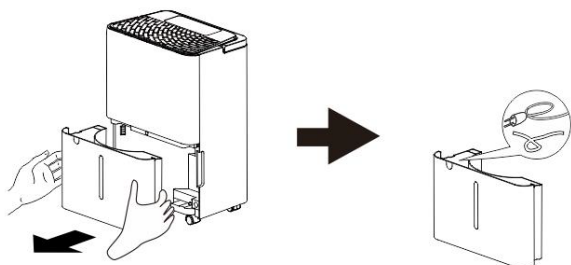
- When the appliance is running, press the "⌚" button, the screen starts to flash, press the "+" or "-" to adjust the set time from 0.5-24 hours.
- In 5 seconds without operation, the timer will start the function, then the "Timer" indicator light will be active.
- Press the "⌚" button again to cancel the Timer, and the "Timer" indicator will turn off.





## SET UP & USE

Before first use, remove the accessories from the bucket

- Remove the bucket from appliance.
- Take out the plug.
- Correctly put back the bucket into the appliance.



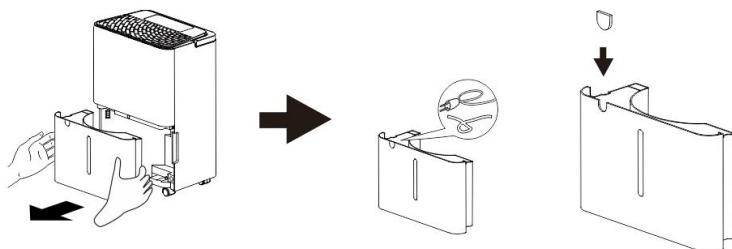
The accessories are include:

	Chip of bucket	1 set
	Drain pipe	1 set

## INSTALLATION

Take out the power cord from bucket.

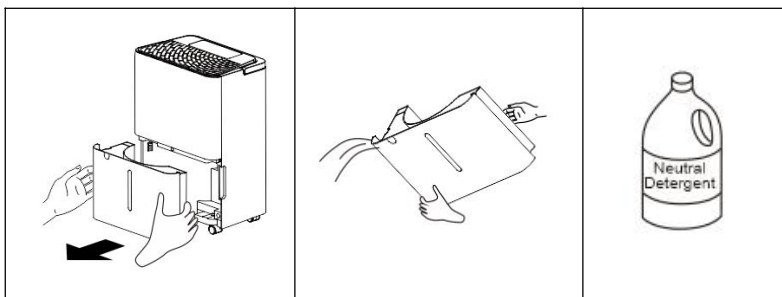
- Take out the bucket, remove the power cord, check if there are any other \*on one line, do not split up the word\* and take out.
- Install the chip on the bucket.



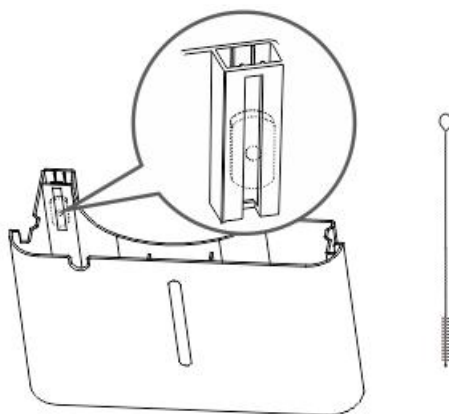
## SET UP & USE

### FULL BUCKET INDICATOR

- When bucket is full, the compressor will shut off, the fan will stop for a few minutes, and will start making a beeping noise, " Tank Full " symbol is flashing.
- The unit will not run again until the bucket is emptied and properly placed back inside the unit.
- The bucket should be cleaned every week to prevent the growth of mold, mildew and bacteria. Use a mild detergent to clean. Once clean, completely dry the bucket and place it back inside the unit.



To prevent the water tank float from being blocked by dust, clean the float with a brush once a month to ensure that the float can float freely and not be trapped by dust.



**Note:** Hold the bucket with both hands when emptying.

**Note:** When the bucket is full or removed from the unit, the compressor will turn off but the fan will continue to run for a few minutes. This is completely normal. The unit will not be removing moisture from the air at this time.

**Note:** During operation, it is normal for the unit to exhaust warm air from the side of the unit.

**CAUTION!** Do not place the bucket on the floor when it is full as it is uneven on the bottom and water may spill.

## SET UP & USE

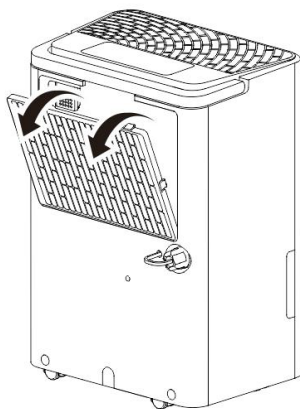
### CLEANING THE FILTER

To keep your appliance working efficiently, you should clean the filter every month of operation.

The filter can be removed as show in the figure to the right.

To avoid possible cuts, avoid contacting the metal parts of the appliance when removing or reinstalling the filter. It can result in the risk of personal injury.

Use a vacuum cleaner to remove dust accumulations from the filter. If it is very dirty, immerse in warm water and rinse a number of times. The water should never be hotter than 104F (40C). After washing, leave the filter to dry then attach the intake grille to the appliance.



### AUTOMATIC DEFROST

When frost builds up on the evaporator coils, the compressor will stop and the fan will continue to run until the frost disappears. When the coils are completely defrosted, the compressor will automatically restart and dehumidify will resume

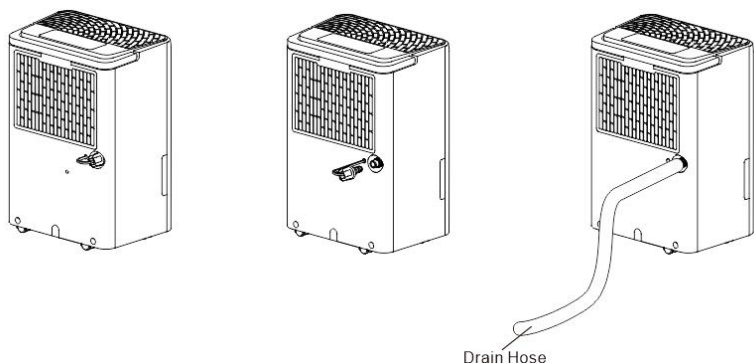
# SET UP & USE

## CONTINUOUS DRAINAGE

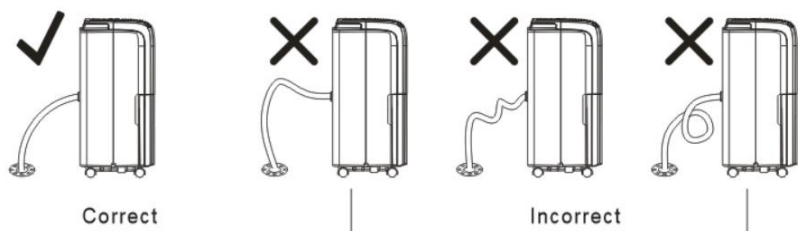
Connect the drain pipe on the back of unit, then the unit can continuous run without clean the bucket.

- 1) Put the unit on level floor, unscrew the cap on the back of unit;
- 2) Install the drain pipe on connector;
- 3) Press "⏻" button to run the unit.

**Note:** If there is no need to use the function of continuous drain, please install the cap on the drain hole back of unit, then the water will flow into bucket.



**Note:** Please install the drain pipe following the illustration below. Please install the drain pipe correctly, or the water cannot drain from the pipe.



Notice:

If the unit is placed on an un-level ground or if the drain pipe is not correctly installed, the water will fill the bucket causing the unit to stop running.

Always ensure the unit is on an even, level surface and the drain pipe is properly installed.

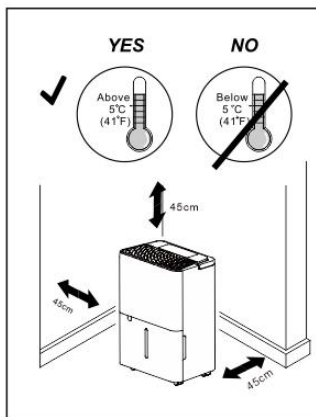
At the same time, the bucket needs to be installed correctly.

# SET UP & USE

## LOCATION REQUIREMENTS

The unit operating in a basement will have little effect in drying out an adjacent enclosed storage area, such as a closet, unless there is adequate circulation of air in and out of the area.

1. Do not use outdoors.
2. This appliance is intended for indoor use only.  
Place the appliance on a smooth, level floor surface that is strong enough to support the unit with a full bucket of water.
3. Allow at least 18" (45cm) of around and above space away from the wall for efficient working.
4. Place the appliance in an area where the temperature will not fall 41°F (5°C).
5. Use the dehumidifier in cooking, laundry, bathing and dish-washing areas that have excessive moisture.
6. Place the dehumidifier away from a clothes dryer.
7. Use the dehumidifier in a basement to help prevent moisture damage.
8. The dehumidifier must be operated in an enclosed area to be most effective, close all doors, windows and other outside openings to the room.
9. Do not block the air inlet or outlet of the appliance. Reduced air flow will result in poor performance and could damage the unit.



# CARE & CLEANING

## CLEAN AND MAINTENANCE

Before cleaning or maintenance, turn the appliance off by pressing the “POWER” button on the control panel, wait for a few minutes then unplug from the mains socket.

## CLEANING THE CABINET

You should clean the appliance with a slightly damp cloth then dry with a dry cloth.

Never wash the appliance with water, it could be dangerous.

Never use petrol, alcohol or solvents to clean the appliance.

Never spray insecticide liquids or similar.

## END OF SEASON OPERATIONS

- To unplug from the mains socket, empty the bucket, remove the cap.
- Run off all water left inside the appliance. When all the water has been drained, put the cap back in place.
- Clean the filter and dry thoroughly before putting back.
- Cover the appliance prevent from dust.
- Store the appliance upright in a dry location.

## START OF SEASON CHECKS

Make sure the power cable and plug are undamaged and the system is efficient. Follow the installation instructions precisely.

## **TROUBLESHOOTING & WARRANTY**

### **BEFORE YOU CALL FOR SERVICE**

IF THE APPLIANCE FAILS TO OPERATE:

- A) Check to make sure that the dehumidifier is plugged in securely. If it is not, remove the plug from the outlet, wait 10 seconds and plug it in again securely.
- B) Check for a blown circuit fuse or a tripped main circuit breaker. If these seem to be operating properly, test the outlet with another appliance.

IF NONE OF THE ABOVE SOLVES THE PROBLEM, CONTACT A QUALIFIED TECHNICIAN. DO NOT TRY TO ADJUST OR REPAIR THE APPLIANCE YOURSELF.

## **IMPORTANT**

### **DO NOT RETURN THIS PRODUCT TO THE STORE**

If you have a problem with this product, please contact the BLACK+DECKER Customer Satisfaction Center at 844-299-0879 or [service@equitybrands.com](mailto:service@equitybrands.com)

**DATED PROOF OF PURCHASE, MODEL # AND SERIAL #  
REQUIRED FOR WARRANTY SERVICE**

# TROUBLESHOOTING & WARRANTY

Troubleshoot your problem by using the chart below. If the dehumidifier still does not work properly, contact W Appliance Co. customer service center or the nearest authorized service center. Customers must never troubleshoot internal components.

Problem	Possible Causes	Solutions
Dehumidifier does not start	The dehumidifier is unplugged.	Make sure the dehumidifier's plug is pushed completely into the outlet.
	The fuse is blown/circuit breaker is tripped.	Check the house fuse/circuit breaker box and replace fuse or reset breaker.
	Dehumidifier has reached its present level or the bucket is full.	The dehumidifier automatically turns off when either condition occurs. Change to a lower setting or empty the water bucket and replace properly.
	Bucket is not in the proper position.	The bucket must be in place and securely seated for the dehumidifier to operate.
	Power Failure.	There is a protective time delay (up to 3 min.) to prevent trip ping of the compressor overload. For this reason, the unit may not start normal dehumidify for 3 min after it is powered back on.
Dehumidifier does not dry the air as it should	Not enough time allowed for unit to remove moisture.	When first installed allow at least 24 hours to maintain the desired dryness.
	Airflow is restricted.	Make sure there are no curtains, blinds, or furniture blocking the front or back of the dehumidifier. See the CHOOSING A LOCATION section.
	Dirty filter.	See the CLEAN FILTER section.
	The Humidity Control may not be set low enough.	For drier air, press the “-” button to lower the percent humidity desired in the room or set the dehumidifier to Cont. For maximum dehumidify.
	Doors and windows may not be closed tightly.	Check that all doors, windows, and other openings are securely closed.
	Clothes dryer may be blowing moist air into the room.	Install the dehumidifier away from the dryer. The dryer should be vented outside.
	Room temperature is too low.	Moisture removal is best at higher room temperatures. Lower room temperatures will reduce the moisture removal rate. This model is designed to operate at temperatures above 5°C (41°F).
Appliance runs too long	The area is too large	The capacity of the appliance can not meet the area of the room
	Doors and windows are open	Close the door and window



## TROUBLESHOOTING & WARRANTY

Frost appears on heat-exchanger	Appliance run recently or the room temperature is too low	It is normal, frost usually disappear in 60 min
Fan noise	The air is passing through the appliance	This is normal
Water on the floor	The drain connection may be aging or loose	Check the drain connection and the appliance is placed level
	The drain pipe is connected, but the water is not drained.	If use the bucket, remove the drain pipe and put back the drain cover; or install the drain pipe correctly

If the following error code appears, contact the after-sales service department

Code	Description	Possible Causes	Solutions
EH	Humidity sensor failure	Humidity sensor is damaged.	Connect customer service center.
E2	Temperature sensor failure	Temperature sensor is damaged.	Connect customer service center.
E3	Gas leakage	Gas is leak.	Connect customer service center.

Strictest operation environment: 5°C-32°C (41°F-90°F), 30%RH-90%RH.

# TROUBLESHOOTING & WARRANTY

## LIMITED WARRANTY

Any repair, replacement, or warranty service, and all questions about this product should be directed to BLACK+DECKER at **844-299-0879** from the USA or Puerto Rico.

BLACK+DECKER warrants to the original purchaser that the product will be free from defects in material, parts and workmanship for the period designated for this product. The warranty commences the day the product is purchased and covers up to a period of **1 year (12 months) for labor/1 year (12 months) for parts (manufacturing defects only)**.

BLACK+DECKER agrees that it will, at its option, replace the defective product with either a new or remanufactured unit equivalent to your original purchase during the warranty period.

**Exclusions:** This warranty does not apply to the below:

1. If the appearance or exterior of the product has been damaged or defaced, altered or modified in design or construction.
2. If the product original serial number has been altered or removed or cannot be readily determined.
3. If there is damaged due to power line surge, user damage to the AC power cord or connection to improper voltage source.
4. If damage is due to general misuse, accidents or acts of God.
5. If repair attempts are done by unauthorized service agents, use of parts other than genuine parts or parts obtained from persons other than authorized service companies.
6. On units that have been transferred from the original owner.
7. On products that have been purchased as refurbished, like new, second-hand, in a "As-Is" or "Final Sale" terms.
8. To products used in a commercial or rental setting.
9. To products used in settings other than ordinary household use or used other than in accordance with the provided instructions.
10. To damages for service calls for improper installations.
11. Transportation and shipping costs associated with the replacement of the unit.
12. Service calls to instruct you how to use your product.
13. Service calls to repair or replace the house fuse, reset the circuit breaker or correct the wiring in the house.

REPAIR OR REPLACEMENT AS PROVIDED UNDER THIS WARRANTY IS THE EXCLUSIVE REMEDY OF THE CUSTOMER; BLACK+DECKER. SHALL NOT BE LIABLE FOR ANY INCIDENTAL OR CONSEQUENTIAL DAMAGES FOR BREACH OF ANY EXPRESS OR IMPLIED WARRANTY ON THIS PRODUCT, EXCEPT TO THE EXTENT PROHIBITED BY APPLICABLE LAW. ANY IMPLIED WARRANTY OF MERCHANTABILITY OF FITNESS FOR A PARTICULAR PURPOSE ON THIS PRODUCT IS LIMITED TO THE DURATION OF THE WARRANTY.

Some states do not allow the exclusion or limitations of incidental or consequential damages, or limitations on how long the warranty lasts. In these cases the above exclusions or limitations may not apply to you. This warranty gives you specific legal rights and you may also have other rights which vary from state to state.

**Obtaining Service:** To obtain service, product literature, supplies or accessories please call **844-299-0879** to create a ticket for exchange/repair. Please make sure to provide the date of purchase, model number and a brief description of the problem. Our customer service representative will contact you or send detailed return instructions.

BLACK+DECKER does not warrant that the appliance will work properly in all environmental conditions, and makes no warranty and representation, either implied or expressed, with respect to the quality, performance, merchantability, or fitness for a particular purpose other than the purpose identified within this user's manual. BLACK+DECKER has made every effort to ensure that this user's manual is accurate and disclaims liability for any inaccuracies or omissions that may have occurred. Information in this user's manual is subject to change without notice and does not represent a commitment on the part of BLACK+DECKER. BLACK+DECKER reserves the right to make improvements to this user's manual and/or to the products described in this user's manual at any time without notice. If you find information in this manual that is incorrect, misleading, or incomplete, please contact us at **844-299-0879**.

W Appliance Co.  
1356 Broadway  
New York, NY 10018

# EXTENDED WARRANTY COVERAGE

## Protect Your Appliance with Extended Warranty Coverage

Thank you for purchasing your new appliance! Your product comes with our one-year limited warranty, but why stop there? With our Extended Warranty and Accidental Damage Protection Plan, provided by Mulberry, you can ensure your appliances are covered for longer—without worrying about unexpected breakdowns or accidents.

### Why Upgrade to the Extended Warranty Plan?

- **Comprehensive Protection** – Extend your warranty coverage and get full protection for accidental damage and mechanical/electrical failures, giving you peace of mind well beyond the first year.
- **No Hidden Costs** – You won't pay any deductibles or service fees for repairs or replacements. We've got you covered!
- **Avoid Expensive Repairs** – Appliances like refrigerators, air conditioners, and dishwashers can be costly to repair. Keep your products running smoothly without the worry of unexpected repair bills.
- **Quick & Easy Claims** – Mulberry offers hassle-free claims and quick, reliable service when you need it most—no complicated paperwork, just fast and efficient help.



Coverage	Basic Warranty	Protection +
Mechanical / Electrical Failure Coverage	Yes (1 year)	Yes (2 - 4 years)
Service Fee or Deductible	Yes (may apply)	No
Parts & Labor Costs Covered	Yes (limited to 1 year)	Yes (2 - 4 years)
Hassle-Free Claims Process	Standard	Priority (faster service)
Repair / Replacement Options	Yes (limited to 1 year)	Yes (2 - 4 years)
Convenience & Peace of Mind	Limited to 1 year	Guaranteed for up to 4 years

This device complies with part 15 of the FCC rules. Operation is subject to the following two conditions: 1) This device may not cause harmful interference, and 2) This device must accept any interference received, including interference that may cause undesired operation. This equipment has been tested and found to comply with the limits for a Class B digital device, pursuant to Part 15 of the FCC rules. These limits are designed to provide reasonable protection against harmful interference in a residential installation. This equipment generates, uses and can radiate radio frequency energy and, if not installed and used in accordance with the instructions, may cause harmful interference to radio communications. However, there is no guarantee that the interference will not occur in a particular installation. If this equipment does cause harmful interference to radio or television reception, which can be determined by turning the equipment off and on, the user is encouraged to try to correct the interference by one or more of the following measures: a) Reorient or relocate the receiving antenna. b) Increase the separation between the equipment and the receiver. c) Connect the equipment into an outlet different from that which the receiver is connected. d) Consult the dealer or an experienced radio/TV technician for help.

BLACK & DECKER, BLACK+DECKER, the BLACK & DECKER and BLACK+DECKER logos and product names and the orange and black color scheme are trademarks of The Black & Decker Corporation, used under license. All rights reserved.

Product in this box may differ slightly from that pictured. Does not affect function.  
Not all accessories shown in photography are included in this package.

Imported by W Appliance, Inc., 1356 Broadway, New York, NY 10018